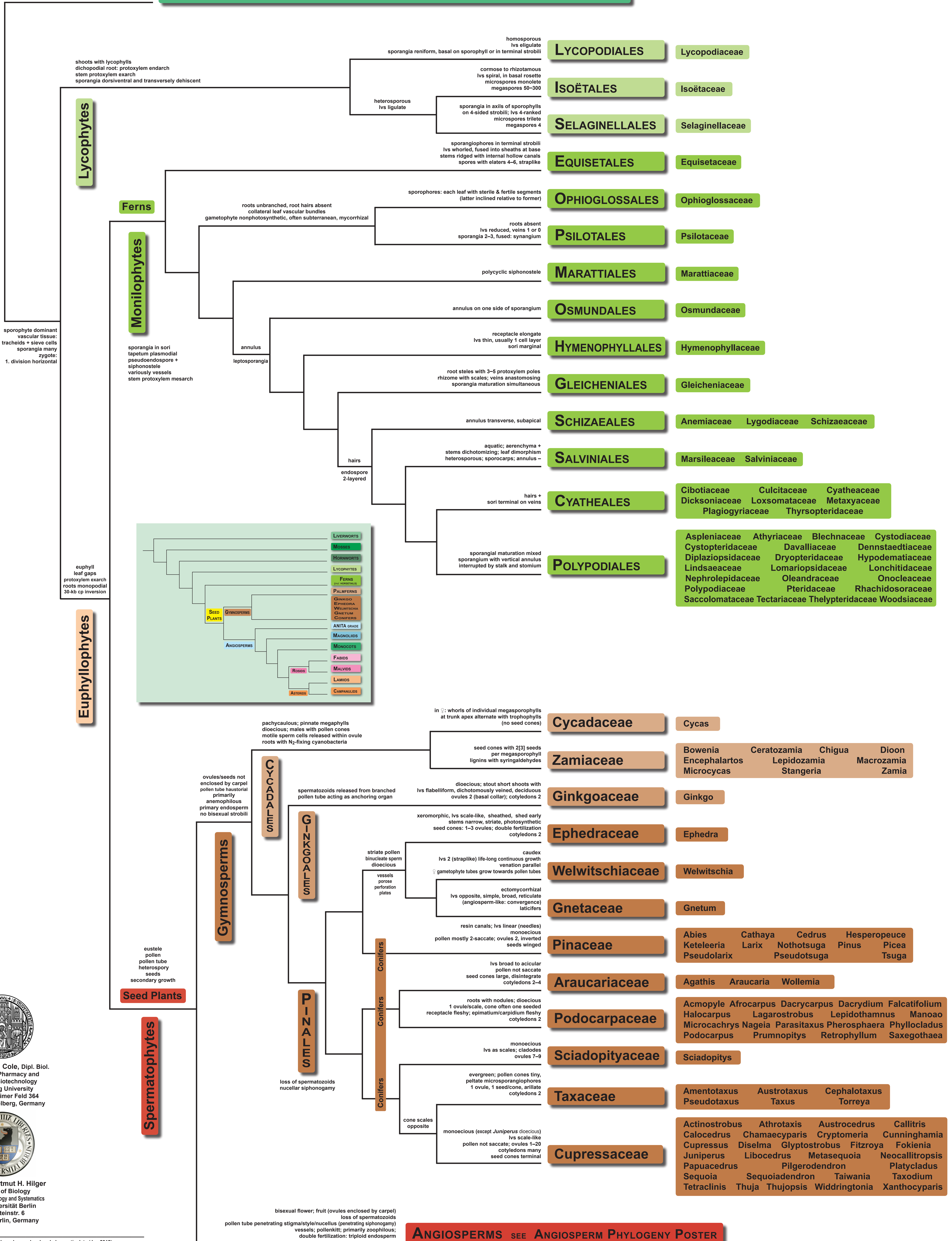


TRACHEOPHYTE PHYLOGENY

Vascular Plants – Systematics and Characteristics

HORNWORTS, MOSSES, LIVERWORTS SEE "BRYOPHYTE" PHYLOGENY POSTER



ANGIOSPERMS SEE ANGIOSPERM PHYLOGENY POSTER



Theodor C. H. Cole, Dipl. Biol.
Institute of Pharmacy and
Molecular Biotechnology
Heidelberg University
Im Neuenheimer Feld 364
D-69120 Heidelberg, Germany



Prof. Dr. Hartmut H. Hilger
Institute of Biology
Botany - Morphology and Systematics
Freie Universität Berlin
Altensteinstr. 6
D-14195 Berlin, Germany

• hypothetical tree based on molecular phylogenetic data (Jan 2012)
• branch lengths deliberate, not expressing actual time scale position of many characters on tree unclear
• if a character is marked as being a potential synapomorphy at a node/clade, this does not mean that all members of that clade possess that character
• References: Judd W et al. (2007); Simpson M (2010); Soltis DE et al. (2005/2011); Christenhusz MJM et al. (2011)
see also: Stevens PF (2011) APweb - www.mobot.org/MOBOT/research/APweb