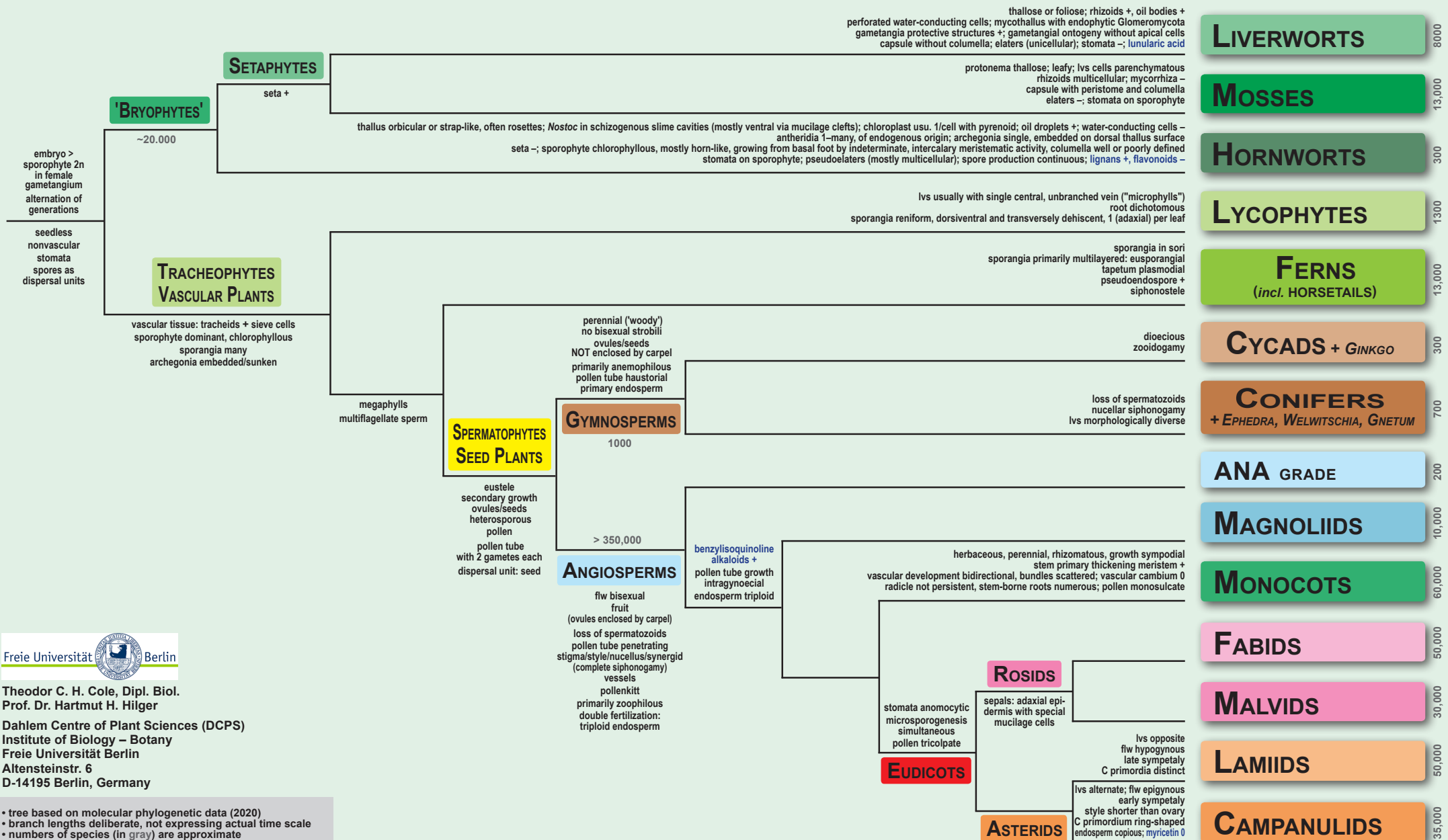


EMBRYOPHYTES - LAND PLANTS

Relationships and Characteristics



Theodor C. H. Cole, Dipl. Biol.
Prof. Dr. Hartmut H. Hilger

Dahlem Centre of Plant Sciences (DCPS)
Institute of Biology – Botany
Freie Universität Berlin
Altensteinstr. 6
D-14195 Berlin, Germany

• tree based on molecular phylogenetic data (2020)
• branch lengths deliberate, not expressing actual time scale
• numbers of species (in gray) are approximate

References: APG IV 2016; Judd et al. 2016; Kubitzki 1998 ff; Li HT et al. 2019; Simpson 2020; Soltis et al. 2011/2014/2018; Stevens 2020 (APweb)