

SAMMALTEN FLOGENIA

MAKSA-, LEHTI- JA SARVISAMMALTEN SYSTEMATIikka JA OMINAISUUDET



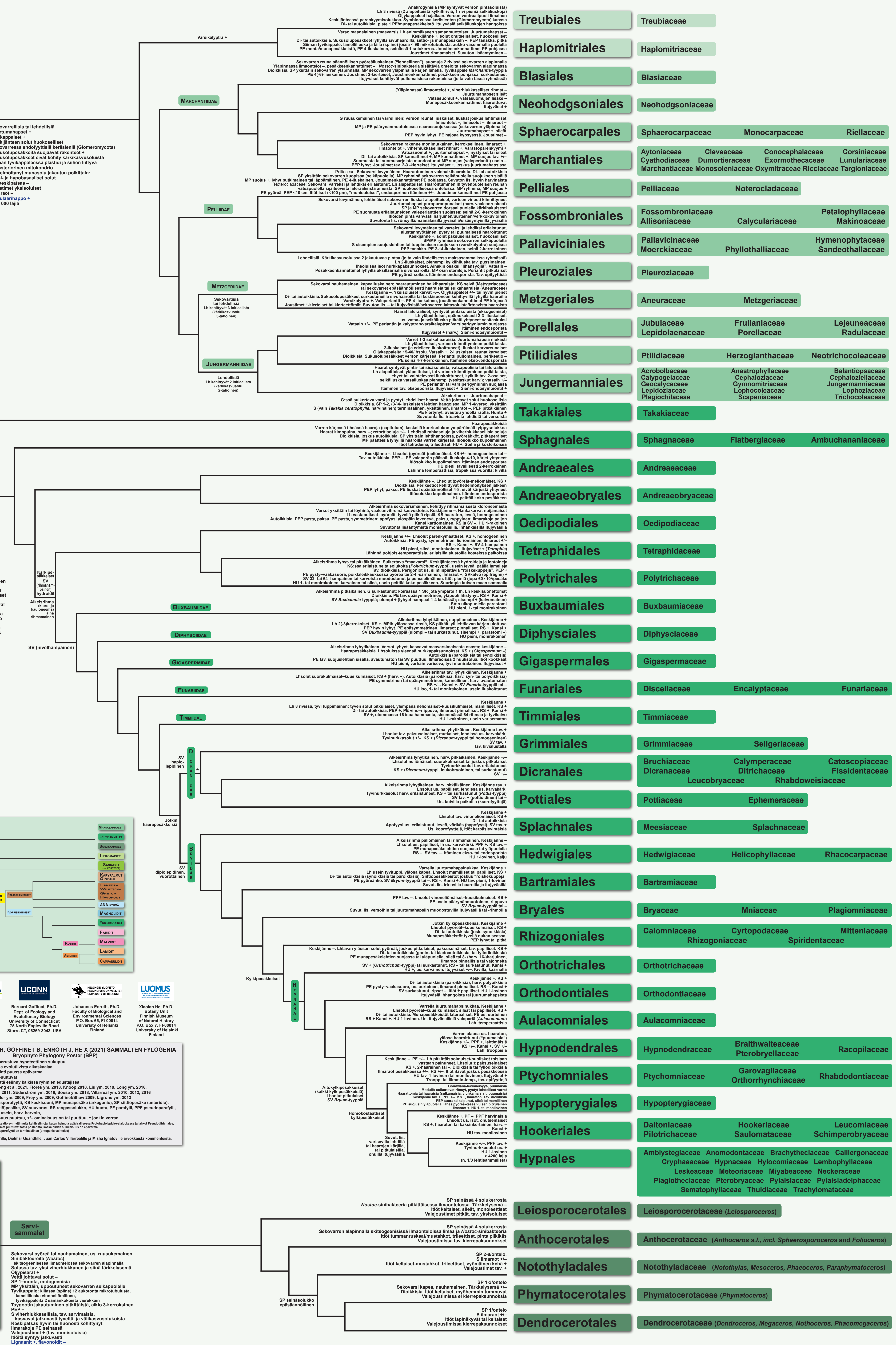
Maksa-sammal

SEtaphyta

Lehti-sammal

Bryophyta

Sarvisammal



Freie Universität Berlin, UCONN, HELSINKI UNIVERSITY OF HELSINKI, LUOMUS

Theodor C. H. Cole, Dipl. Biol. Prof. Dr. Harriet H. Hilger, Institute of Botany, Freie Universität Berlin, Altessestr. 6, D-14195 Berlin, Germany

Bernard Goffinet, Ph.D. Dept. of Ecology and Evolutionary Biology, University of Connecticut, 75 North Eagleville Road, Storrs CT, 06269-3043, USA

Johannes Enroth, Ph.D. Faculty of Biological and Environmental Sciences, P.O. Box 65, FI-00014 University of Helsinki, Finland

Xiaolan He, Ph.D. Botany Unit, Finnish Museum of Natural History, P.O. Box 1, FI-00014 University of Helsinki, Finland

Putkilokasvit, ks. Putkilokasvien ja Koppisienen fylogenia-posterit